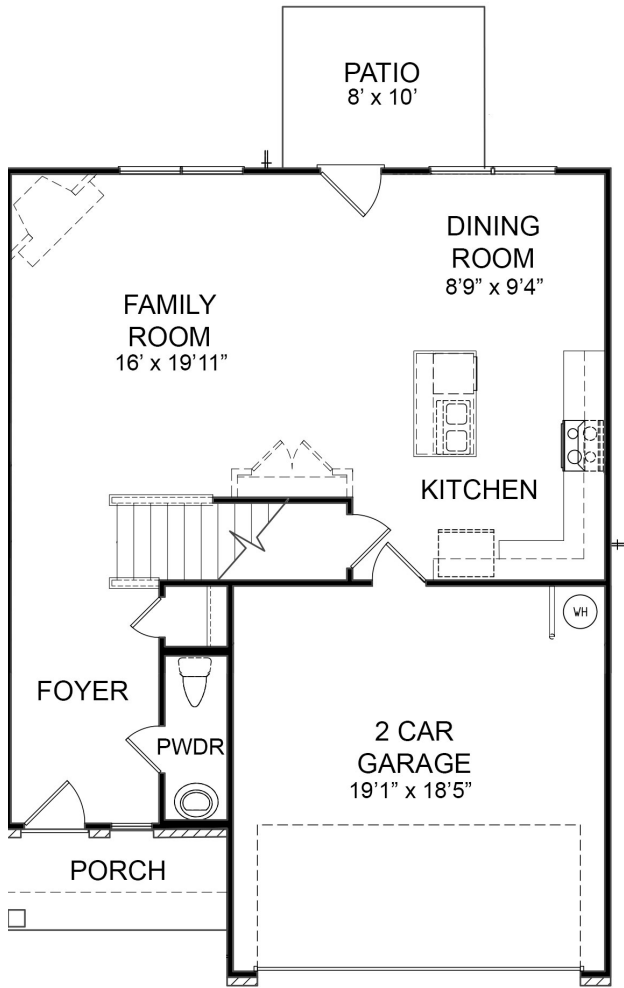


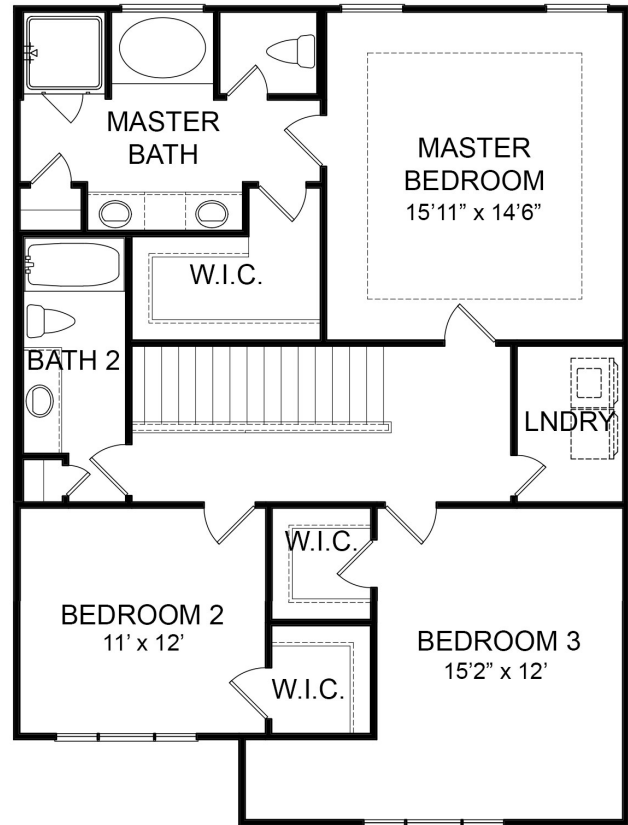
KM HOMES



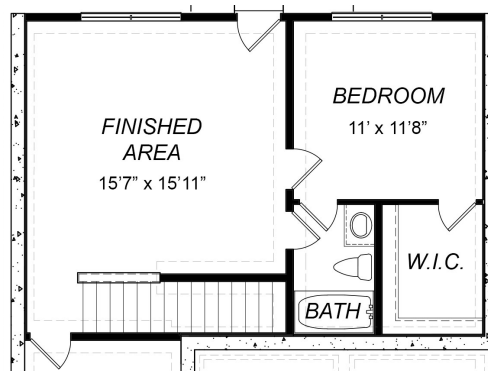
3 Bedrooms
2.5 Bathrooms
2-Car Garage



First Floor



Second Floor



Optional Finished Basement



Floorplans and elevations are artist's concepts and may vary in precise detail from the plans and specifications. KM Homes reserves the right to change prices, plans, dimensions, specifications and features without notice. Elevation shown is representative of plan; more elevations available. Single and double garage doors may vary per elevation. Subject to errors, omissions, deletions and availability. Please contact on-site sales agent for more information.